

ulage

ulage

KATALOG KANALIZACIJSKIH ARMATURA

2008

Grupa: Kanalski poklopci i armatura

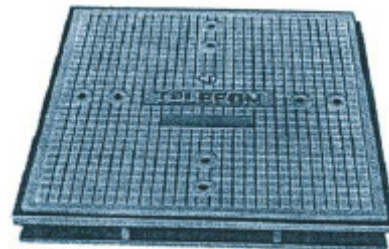
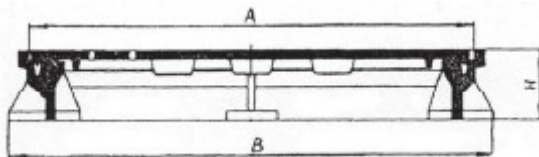
kanalizacijska armatura

Ova grupa proizvoda je namjenjena za zatvaranje otvora koji vode do vodovoda, kanalizacije, telekomunikacijskih kanala, plinske mreže i slično. Proizvodi su od nodularnog ili sivog željeza, po narudžbi.

telefonski poklopac za šahtove na podzemnim telefonskim kablovima

GJL (SL)

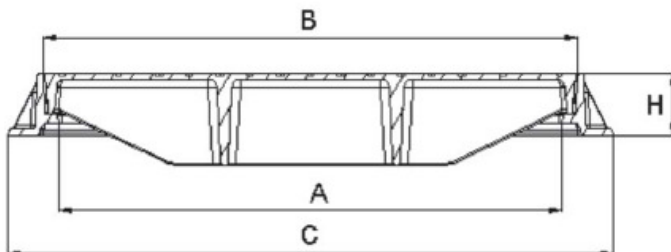
svijetli otvor mm	A mm	B mm	H mm	masa, kg	nosivost KN	oznaka
600x600	700x700	740x740	100		100	



kanalski poklopac i rama

GJL (SL)

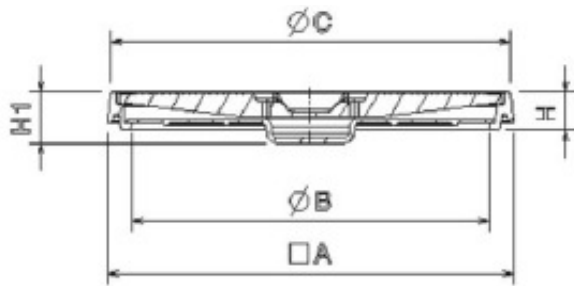
svijetli otvor mm	A mm	B mm	C mm	H mm	masa, kg	nosivost KN	oznaka
600x600	600x600	632x632	666x666	40		53,5	
600x600	600x600	632x632	720x720	75	110	400	RP - 204
600x600	600x600	632x632	666x666	40	60,5	150	RP - 207
600x600	600x600	636x636	724x724	75	96,5	250	RP - 208



kružni poklopac - trotoarski sa dvojnim zatvaranjem i pravokutnom ramom

GJS (NL)

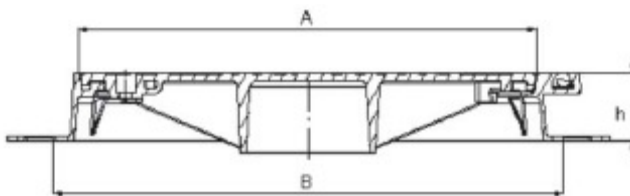
svijetli otvor mm	A mm	B mm	C mm	H mm	H1 mm	masa, kg	nosivost KN	oznaka
230	605	230	595	61	80	45	15	RP - 201



kanalski poklopac i rama

GJS (NL)

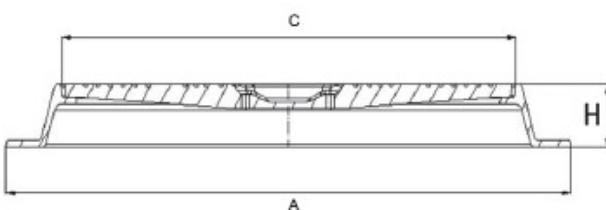
svijetli otvor mm	A mm	B mm	h mm	H mm	masa, kg	nosivost KN	oznaka
595	660	730	100	118	66	400	RP - 213



kružni poklopac - s kružnom ramom

GJS (NL)

svijetli otvor mm	A mm	C mm	H mm	masa, kg	nosivost KN	oznaka
440	540	465	50	16,5	15	RP - 211
540	680	595	575	31	15	RP - 242

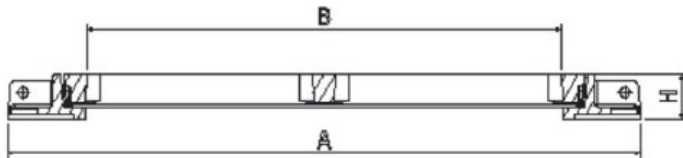


kanalske rešetke

- rešetke su široke 350 mm i 2 X 1 - profila Č

GJL (SL)

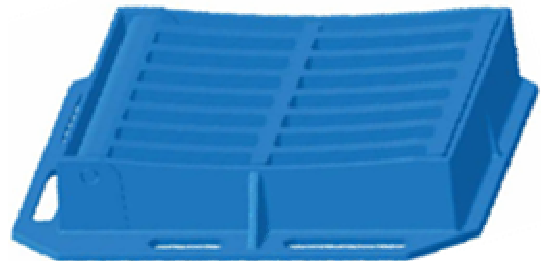
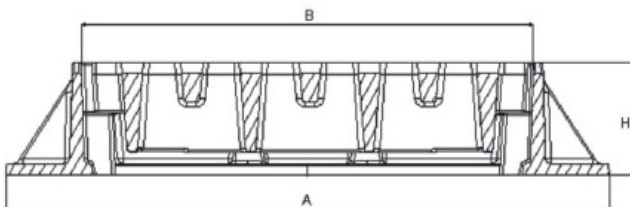
svijetli otvor	A	B	h	masa, kg	nosivost	oznaka
mm	mm	mm	mm		KN	
600	648	600	45	35	50	RP - 513
500	606	500	70	60	400	RP - 514



pravokutni slivnik- ulični sa kružnim otvorom i širokom pravokutnom ramom

GJS (NL)

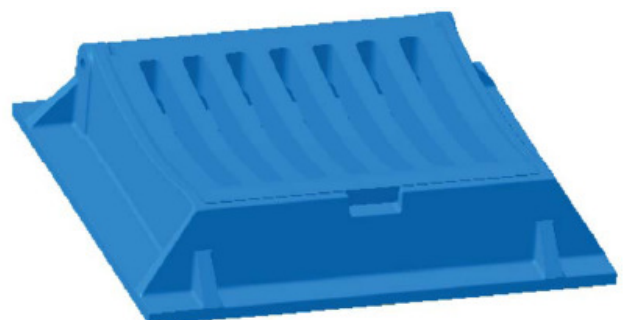
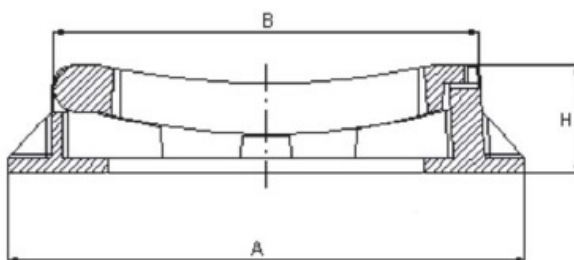
svijetli otvor	A	B	H	masa, kg	nosivost	oznaka
mm	mm	mm	mm		KN	
390	535x535	425x390	100	41,1	400	RP - 511



kanalska rešetka s ramom

GJL (SL)

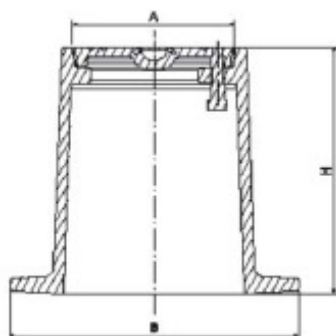
svijetli otvor	A	B	H	masa, kg	nosivost	oznaka
mm	mm	mm	mm		KN	
330x330	540x540	450	115	84	250	RP -402



kapa za hidrante – s elipsoidnim otvorom

GJL (SL)

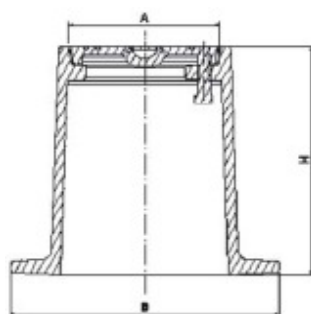
svijetli otvor mm	A mm	B mm	H mm	masa, kg	nosivost KN	oznaka
370 x 440	370 x 440	375	260	30		RP-272
250 x 250	390 x 280	410	240	18		RP-273



kružna kapa za zasun

GJL (SL)

mm	A mm	B mm	H mm	masa, kg	oznaka
70	70	160	140	3	RP-263
125	100	180	200	7	RP-262



kapa za ulične ventile i slavine u vodovodima

GJL (SL)

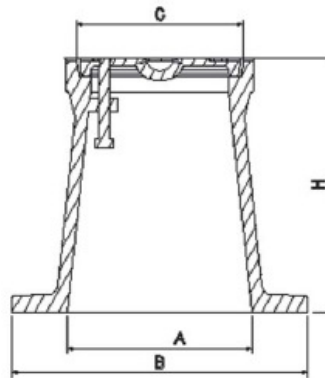
svijetli otvor mm	A mm	B mm	C mm	H mm	masa, kg	oznaka	
100	120	200	145	250	8,7	RP - 264	DIN 4057



kapa za ulične zasune u plinovodima

GJL (SL)

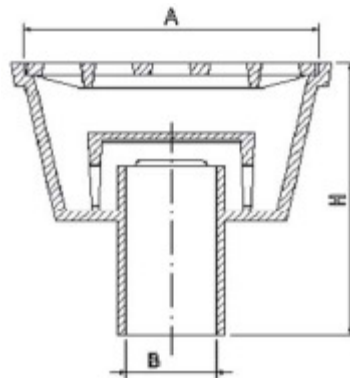
svijetli otvor mm	A mm	B mm	C mm	H mm	masa, kg	oznaka	
77	95	170	120	250	6,5	RP - 265	DIN 4059
140	185	270	190	270	15,3	RP - 266	DIN 4058



dvorišni slivnik - kvadratni

GJL (SL)

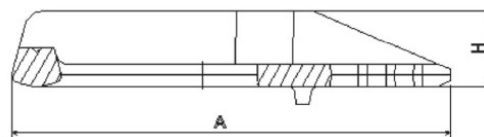
svijetli otvor mm	A mm	B mm	H mm	masa, kg	oznaka
250 x 250	300x300	100	240	24	RP-301
250 x 250	300x300	150	30	RP-302	



stepenica

GJL (SL)

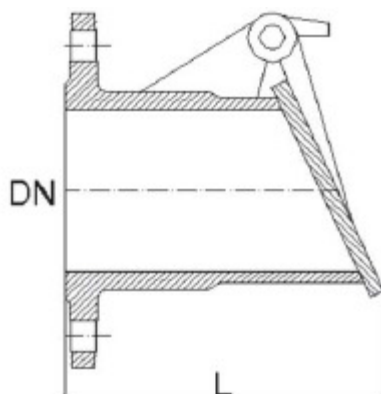
A	H	masa, kg
255	150	3,30



poklopac

GJL (SL)

DN	L	masa, kg
50	174	5
60	183	6
80	200	11
100	214	13
125	240	18
150	257	23
200	290	32
250	320	41
300	320	55
350	380	76
400	460	126



GK gibault spojnica - tip B,C, D

GK

GJL (SL)

D	L	O ring						vijak s maticom		masa, kg				
		D1			d1			n	M	B	C	D		
		PN6	PN10	PN16	PN6	PN10	PN16			PN6	PN10	PN16		
50	8,2	60			10			3	M 10X100	1,4				
60	8,6	70								1,6				
80	90	88			12			4	M 12X120	2,9		3,0		
100	110	110								3,5			3,8	3,9
125		135								4,5			5,0	5,1
150	120	160			14			6	M 12X130	5,4				
200		210								7,8			8,0	8,3
250	130	260			14			6	M 16X140	12,9				
300		312	330							15,4			13,3	13,8
350	145	365			14		17		6	M 16X160	21,1			
400		416			17			26,8						
450		468		520				34,4			35,1	39,1		
500	165	520		527		17		20		6	M 16X180	37,9		
600	180	620		665		20		8				58,8		
										M 16X200		38,3		
												59,5		
												62,8		

